



AXIAN
INDUSTRIAL

¿QUIÉNES SOMOS?

Axan Industrial nace buscando satisfacer las necesidades de suministro de insumos del sector industrial y comercial, por medio de la distribución y comercialización de productos nacionales e importados. También te podemos ofrecer hacernos cargo de la procura completa de tus requerimientos. Nuestra finalidad es brindar a nuestros clientes una solución integral de procura en sus proyectos y operaciones.

MISIÓN

Satisfacer los requerimientos de nuestros clientes, ofreciendo un suministro de productos de calidad a precios competitivos, por medio de una mejora continua y crecimiento constante de nuestro surtido, brindando un excelente servicio de atención y colaboración.

VISIÓN

Ser reconocidos a nivel nacional como una excelente opción para el suministro de insumos industriales, brindando siempre una solución eficaz a las necesidades de nuestros clientes.

VALORES

- ✓ Honestidad y ética en nuestro servicio
- ✓ Compromiso con nuestros clientes y colaboradores
- ✓ Brindamos confianza y seguridad.
- ✓ Empatía, hacemos nuestras sus necesidades.
- ✓ Responsabilidad operativa, social y ambiental.

Special Machining Solutions

In collaboration with **Swiss Turn México**, we have leading technology workshop, providing the best technical customer's experience with higher quality service required by industries.



BALANCED SERVICES

Our processes support the latest in CNC machining and turning plus wire EDM high performance cutting, can support a high level of part complexity and provide exceptional surface finishes. On top of our machining skills, we have a full dedicated logistic process to comply with most demanding needs of customers, like consignment contracts, made to order, platform life support, engineering change support, aftermarket supply.

COMPETITIVE PRICE

With a low level of manufacturing overhead, our cost and prices are lower than competition because our company members are aimed to add value to our customers' parts.

Our machines are the best in the market; our operators are fully skilled both in manufacturing and quality. FEMA, control plans, and dimensional records are aimed to produce quality in every single operation.

INTERNAL PROCESS PERSPECTIVE



CUSTOMER PERSPECTIVE

Knowing what the industry demands, the team is dedicated to understand the basics of what the customers need and require. No less than that.

Our quality processes, the total dedication to not just produce, but to market and support immediate needs and deliveries are a key strategy of our service.

LEARNING/GROWTH PERSPECTIVE



BALANCED PROCESSES

EQUIPMENT PERSPECTIVE



Machining Center 5 axis
Axile G6
Best in Class in Taiwan



Wire EDM Machine
CAM integrated
Sodick ANL600G
Best in Class in Japan



Surface Grinder NC
Proth 4080AHR Best in
Class in Taiwan



Centerless Grinder 8"
Pintai P-18NC
Best in Class in Taiwan



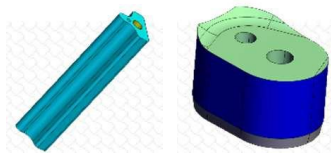
- Trunnion table 600mm diameter
- 600 kg of piece weight
- 60 tools
- 120 degrees of table inclination
- Heidenhain control and 1 micron precision scales
- 20,000 rpm in spindle
- High quality and precision **Significant reduction of part adjustments.**

Up to 50% faster to produce than a conventional 3 axis machine. For quantities range from tens to hundreds of parts



- High precision wire cutting machine
- Speed and ultrafine finish
- Height 8"
- X - 15.75 "(400 mm)
- Y - 11.81 "(300 mm)
- Z - 9.84 "(250 mm)
- Ceramic work base - repeatability
- Integrated CAD-CAM and Lights Out production for an effective and competitive price

High quality and precision and an exterior finish with low roughness



- Grinding of surfaces with superior finishes and precision
- Parallelism 0.001" per in 12"
- Table of 12"x24" with magnetic chuck
- High efficiency in production of quantities batches in the hundreds of pieces due to the size of the table**



- Grinding wheel 8" long
- With superior grinding finish
- Infeed and thru feed capacity for high pin and shaft productions.
- High efficiency in productions of quantities in the hundreds or thousands of pieces, with a NC control of calculated diameter**





BALANCED PROCESSES

EQUIPMENT PERSPECTIVE

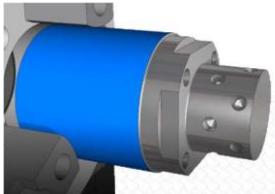


Turn-Mill Center 4 axis
EMCO E65
Best in Class in Europe



- Turn-milling center with main and sub spindle
- 65mm bar diameter size with 24 tools
- High quality with 4 micron precision on turn-milling

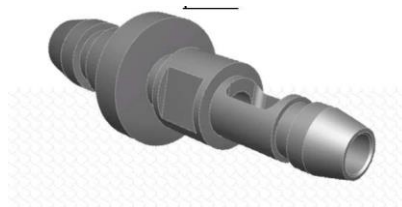
High efficiency in production of quantities in the hundreds of pieces, with a significant reduction of adjustments due to its sub spindle



Swiss Turn 5 axis
Tsugami B0385II Best
in Class in Japan



- Tsugami B0386-III with a highly rigid 38 mm 6-axis Swiss Type CNC lathe built to take the heaviest of cuts
 - 12 feet bar feeder for continuous operation
 - Turn-milling capability due to its 5 axis programming easiness
- High efficiency in large productions of quantities in hundreds to thousands of pieces**



Mitutoyo Measuring
Equipment
Best in Class worldwide

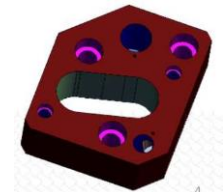


- Electronic height linear gauge
 - Optical comparator with electronic controls
 - Diverse electronic micrometers and verniers
- Measuring instruments calibrated to the most demanding measuring specifications**



Job Shop Machinery

- Manual mill
 - Small Lathe
 - Small Surface Grinder
- Equipment to support small adjustments and fixtures modifications**



Materials Certification



- Materials sourcing from approved suppliers
- Tools Steel
- Aluminum
- Plastics

All Jobs performed with traveler sheet to ensure the quality process is met. Materials certificate issued in the product data record

Heat Treatment Certification Tempering, Carburizing, Nitriding



- We meet the most demanding heat treatment specifications with approved suppliers
- Vacuum heat treatment if requested

All Jobs performed with traveler sheet to ensure the quality process is met. Heat Treatment certificate issued in the product data record

Coatings Certification



- We worked with approved coaters for proper work conditions
- Bohler (Voestalpine)
- Balzers

All Jobs performed with traveler sheet to ensure the quality process is met. Coating certificate issued in the product data record for both adherence and thickness

Records

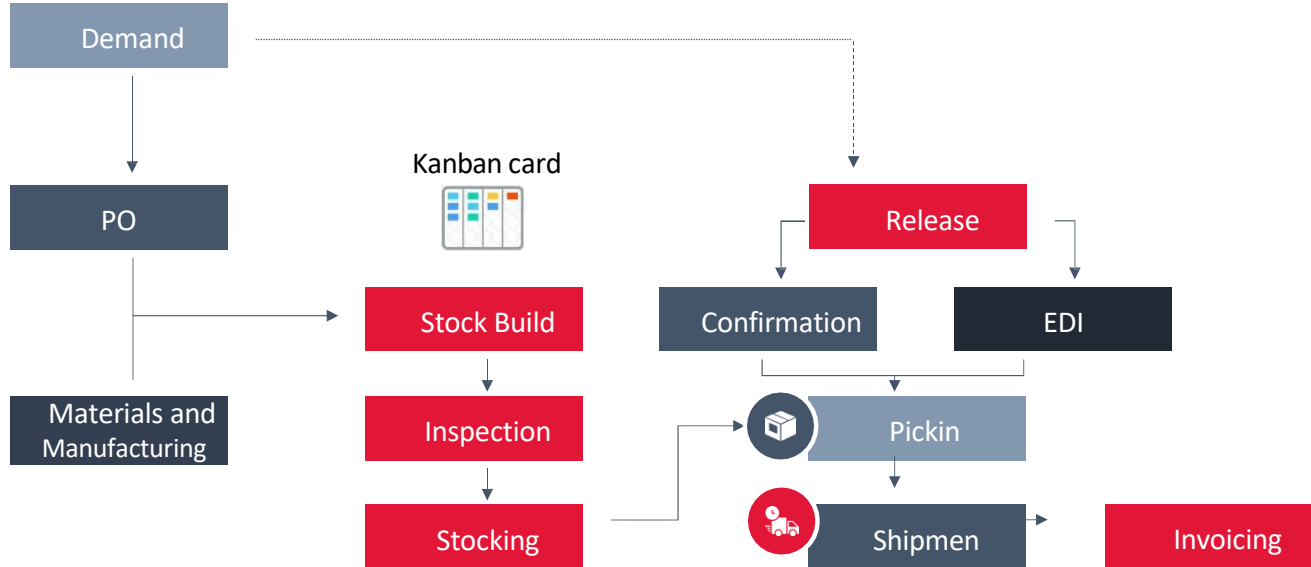


- As our operations advance to finish the part, skilled operators record the dimensions achieved, within the tolerances specified

All jobs performed with traveler sheet contain registered dimensions achieved for consistency in the product size and tolerance

BALANCED SCORECARD

INTERNAL SERVICE PROCESS PERSPECTIVE



Partne



* Platform contract example process

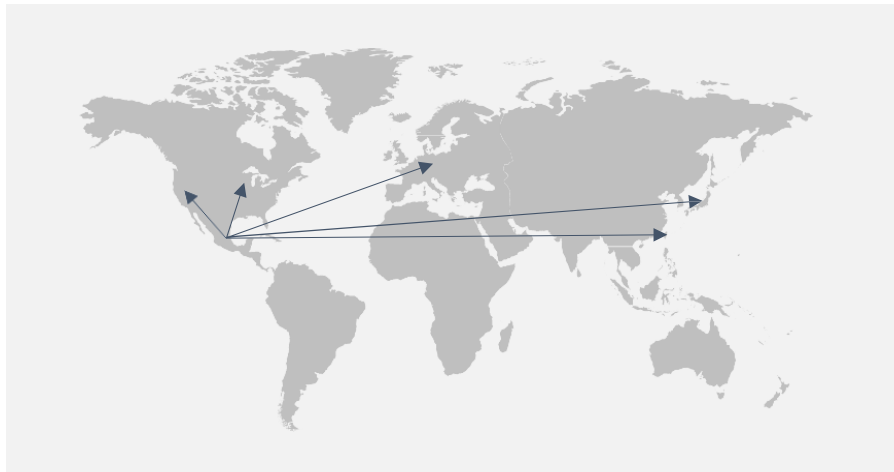


Our logistics process can be adapted to either receive ERP release confirmations and/or EDI signals to pick and ship. Both processes trigger

BALANCED SCORECARD

ANTI-PIRACY POLICIES AND PARTNERSHIP

Always seeking global partners



We strongly believe that our mission is to create partnership as a customer view. Therefore we partner with global companies to achieve the best possible results for our customers.

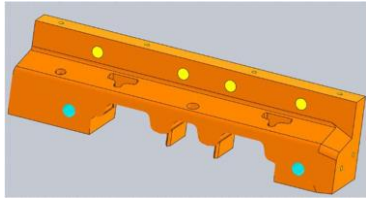




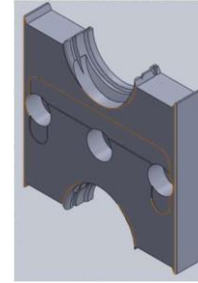
ANEXO: EJEMPLO DE DESARROLLO DEL PROCESO PARA LA CALIDAD

CASOS DE ÉXITO

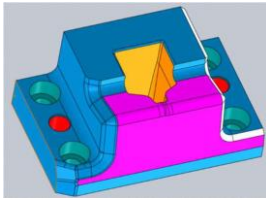
DEL ANÁLISIS DE INGENIERÍA A LA PARTE FÍSICA



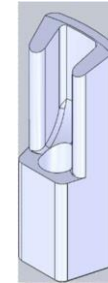
Matriz de 2 vías / D2 60-62HRC



Placa de Choque / M2 60-62HRC



Matriz de Superficie 3D / A2 60-62HRC



Punzón Superficie 3D / M2 60-62HRC

DESARROLLO DE PROCESOS PARA LA CALIDAD

DEL ANÁLISIS DE INGENIERÍA A LA PARTE FÍSICA

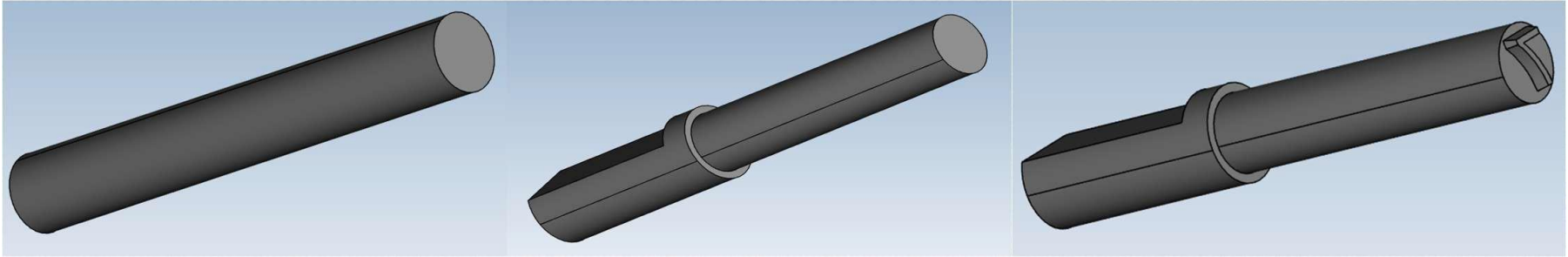
MATERIA PRIMA

PREMAQUINADO

ACABADO NUMERO

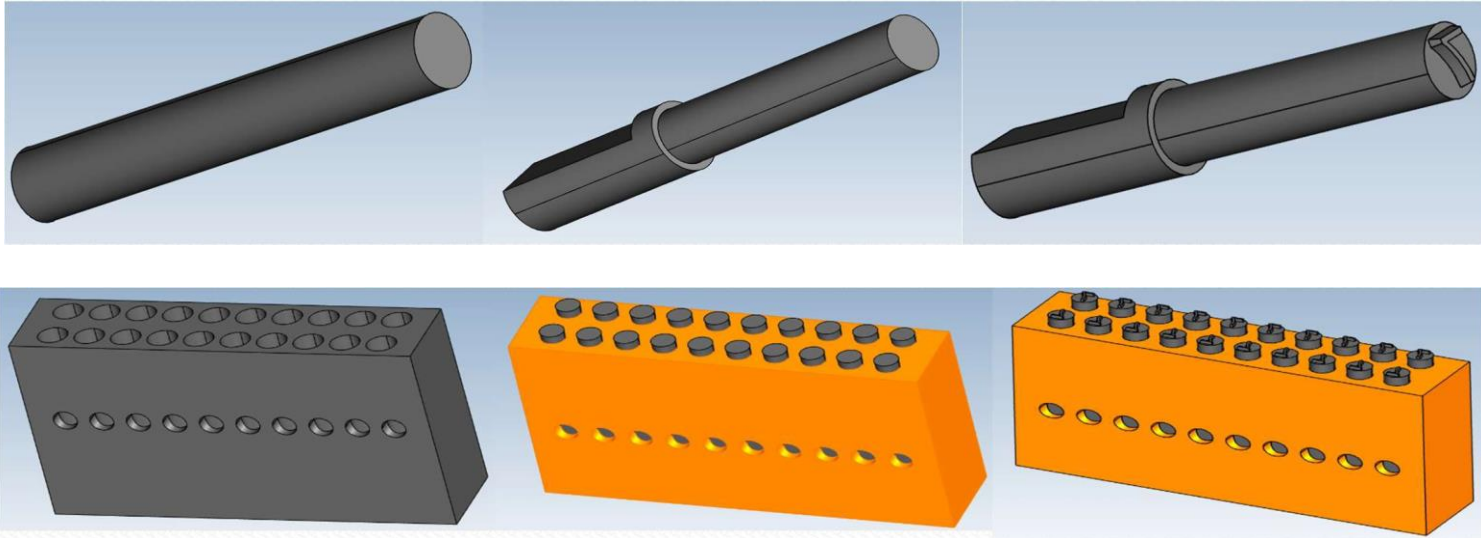
TORNO SUIZO x MILES

7 (EJEMPLO) EN LOTES CON FIXTURE



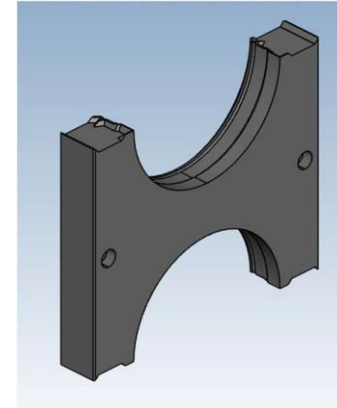
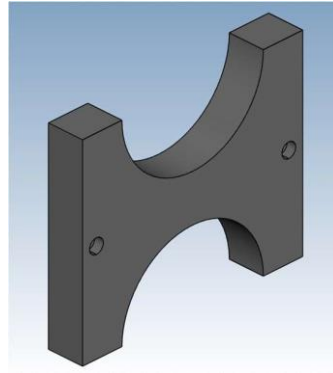
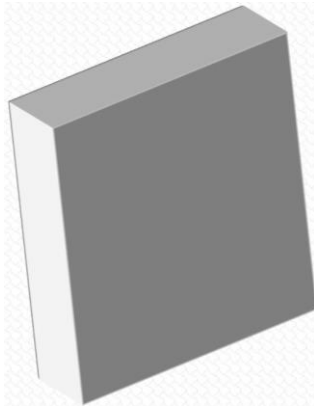
DESARROLLO DE PROCESOS PARA LA CALIDAD

DEL ANÁLISIS DE INGENIERÍA A LA PARTE FÍSICA



DESARROLLO DE FIXTURES

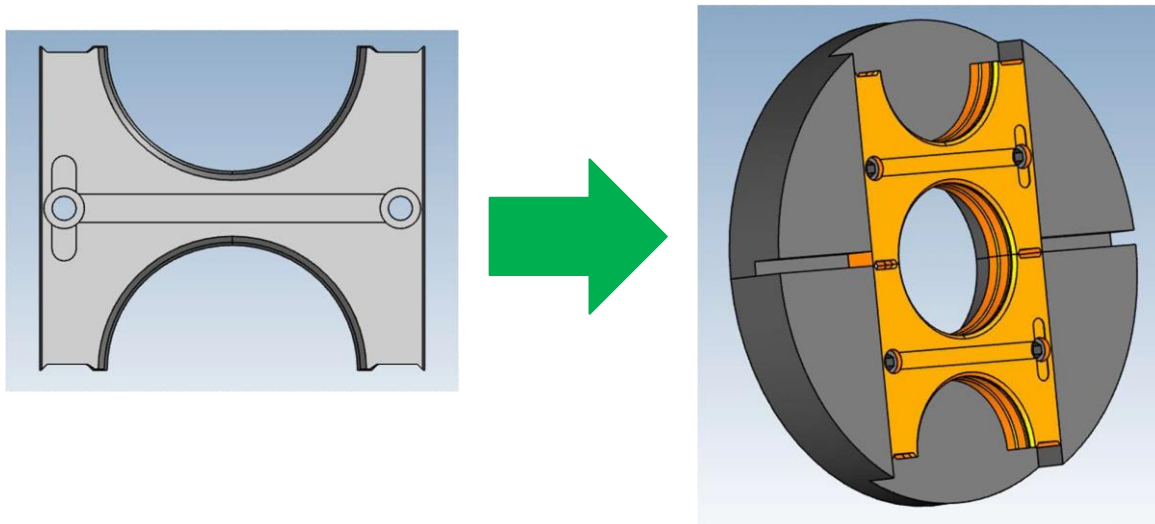
DEL ANÁLISIS DE INGENIERÍA A LA PARTE FÍSICA



PLAN DE CONTROL COMPUESTO

DESARROLLO DE FIXTURES

DEL ANÁLISIS DE INGENIERÍA A LA PARTE FÍSICA



PARA UN MAQUINADO DE
PRECISIÓN

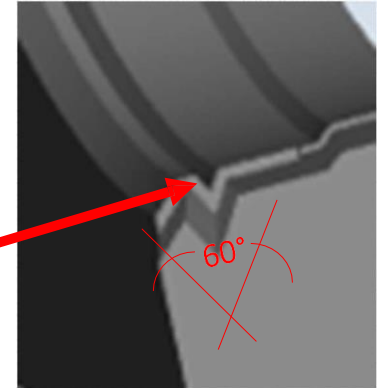
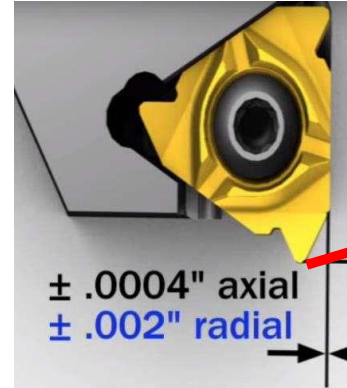
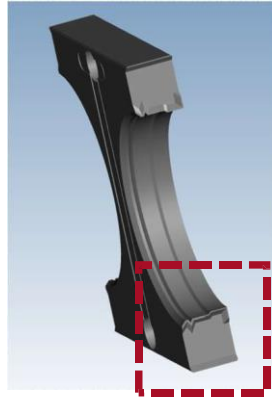
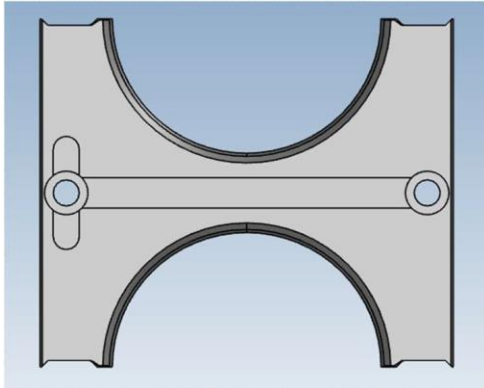
PLAN DE CONTROL



X	Prototipo	Pre Lanzamiento	Produccion	Contacto clave/ Telefono				Fecha(Orig)		Fecha (Rev.)		
	Numero plan de control	1		Orlando Solis 442 2792715				9/24/2019				
Numero de parte/ Revision				Equipo de trabajo				Aprobacion ingenieria del cliente (si requiere)				
CP_08_03_SP				Ingenieria Swiss Turn Mexico								
Descripcion del producto				Fecha de aprobacion				Aprobacion calidad del cliente (si requiere)				
Suavitel 3L Production				9/24/2019								
Planta			Codigo de proveedor	Otras aprobaciones				Fecha de otras aprobacion				
Swiss Turn Mexico												
			Caracteristicas				Metodos					
Numero de proceso	Descripcion de la operacion o proceso	Maquina o equipo de manufactura	No.	Producto	Proceso	Clase especial de caracteristica	Especificacion del producto o proceso	Tecnicas de medicion y evaluacion	Tamaño	Freq.	Metodo de control	Plan de reaccion
1	Pre maquinado	AXILE		Desbaste	Dejar sobre material para rectificado		+ 0.2 medida nominal	Vernier	Todas	100%	Hoja de proceso	Ajuste de parametros de maquinado
2	Quitar sobre material en fresadora	Fresadora manual		Fresado	Eliminar sobrematerial de agarre		+ 0.2 medida nominal	Vernier	Todas	100%	Hoja de proceso	Ajuste de parametros de maquinado
3	Tratamiento termico	TTQ / Industria termica		Dureza de la pieza	Endurecido de material		58-60 HRC	Durometro	50%	Al final del proceso	Certificado de tratamiento	Responsable de tratamiento
4	Escuadrar y rectificar	Rectificadora Proth		Medidas finales exteriores	Rectificado		A -0.05/-0.01 B -0.02/-0.05	Medidor de alturas / Micrometro	Todas	100%	Hoja de proceso	Calibracion de micrometro / Perfilado de piedra
5	Torneado de interior	Torno EMCO		Medidas finales interiores	Maquinado de interior en dispositivo		G +0.05/0 D 0/-0.05	Micrometro de interiores / Go-no go para ranura	Todas	100%	Hoja de proceso	Ajuste de parametros de maquinado
6	Desahogo de parte superior	Sodick		Pre maquinado desahogos	Corte hilo		0.3 - 0.5	Vernier	Todas	100%	Hoja de proceso	Ajuste de parametros de maquinado
7	Chafianes y detalles de desahogos	AXILE		Desahogos	Maquinado final		C1.5x45 / 0.3	Vernier	Todas	100%	Hoja de proceso	Ajuste de parametros de maquinado

DESARROLLO DE HERRAMIENTAS


DEL ANÁLISIS DE INGENIERÍA A LA PARTE FÍSICA



RANURA ESPECIAL 60° EN BORING BAR, DISEÑADA Y FABRICADA INTERNAMENTE, CORTANDO HERRAMIENTAS DE CARBURO, CBN Y ACERO DE ALTA VELOCIDAD FIGURAS PRECISAS Y COMPLEJAS EN NUESTRO PROPIO EQUIPO DE ALAMBRE EDM O EN NUESTRAS RECTIFICADORAS



REGISTROS DE CALIDAD



Swiss Turn México
For Crafting Quality

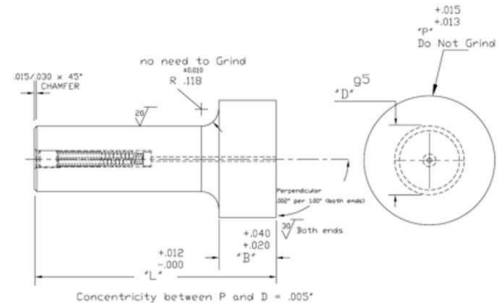
Reporte de Calidad

Fecha _____

Orden _____

Clicote _____

Dibujo:



Concentricity between P and D = .005"


Descripción del proceso:
(Que hay que hacer)

Comentarios o instrucciones especiales:

Operación	Cantidad	Fecha	Máquina	Operador	Material	Blanco/Duro (Dureza)	Otros
1							
2							

Registro de mediciones y calidad

Op 1	Op 2	Op 3	Op 4	Op 5	Op 6	Op 7	Op 8



Swiss Turn México
For Crafting Quality

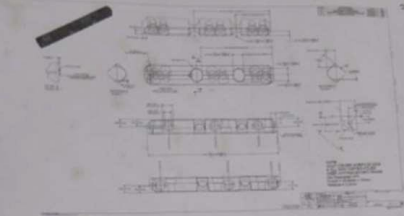
Reporte de Calidad

Fecha _____

Orden _____

Clicote _____

Dibujo:



Concentricity between P and D = .005"

Descripción del proceso:
(Que hay que hacer)

Comentarios o instrucciones especiales:

Car medidas final y acabados

Operación	Cantidad	Fecha	Máquina	Operador	Material	Blanco/Duro (Dureza)	Otros
1							
2							

Registro de mediciones y calidad

Longitud	Ancho	Espesor
152.340	18.505	18.49
152.340	18.50	18.49
152.342	18.50	18.49
152.345	18.50	18.49
152.340	18.50	18.49
152.342	18.49	18.48
152.340	18.50	18.49
152.345	18.50	18.49
152.345	18.50	18.49
152.340	18.50	18.49

CONTACTO:

 **ING. GERARDO CASTELÁN**

 **(55) 4193 4907**

 **g.castelan@axanindustrial.com**

 **<https://www.axanindustrial.com>**